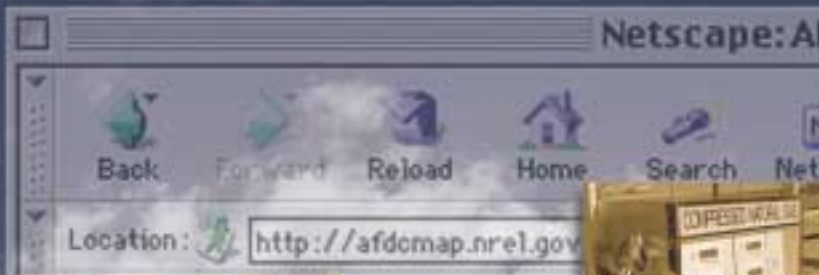


# ALTERNATIVE FUEL REFUELING STATION LOCATOR

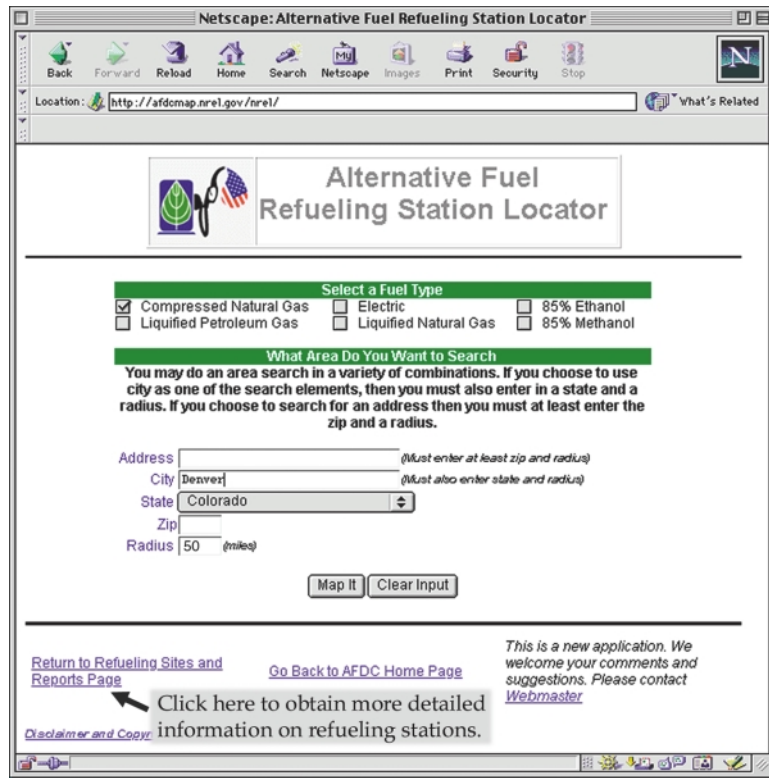
OFFICE of ENERGY EFFICIENCY and RENEWABLE ENERGY



NREL's Alternative Fuels Data Center (AFDC) has developed an interactive mapping system, the **Alternative Fuel Refueling Station Locator**, based on ESRI's ArcView™, which will help you to find refueling and recharging stations available for fleets and private use across the U.S. This user-friendly tool is supported by the most complete alternative fuel refueling and recharging station database in the country. It can also be reached through the AFDC Web site (<http://www.afdc.doe.gov>).

This brochure has been designed to take you through the mapping system, step-by-step, so you can fully understand how it can easily work for you.

To begin, we must get there. Type in the following address:  
<http://afdcmap.nrel.gov/nrel/>

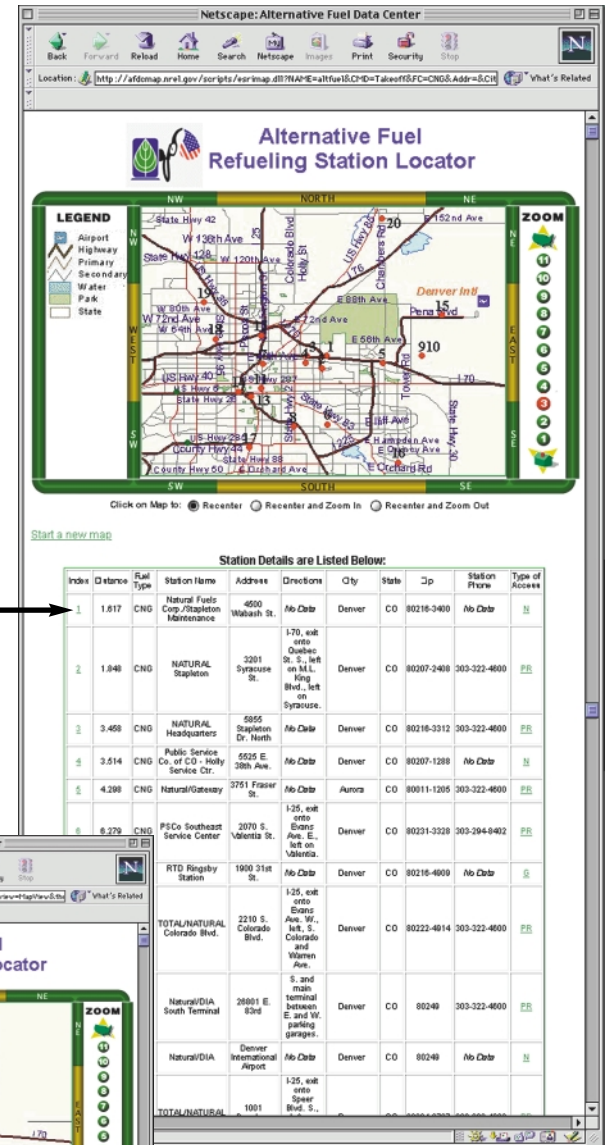


**Screen 1** - First, you must select the fuel type and geographic area for your map.

- You can select one or more fuel types.
- There are 4 options to define the geographic area:
  - 1) Fill out all information boxes, Address – Radius, to obtain a specific map.
  - 2) Fill out City, State and Radius.
  - 3) Fill out Zip and Radius.
  - 4) Fill out State only.

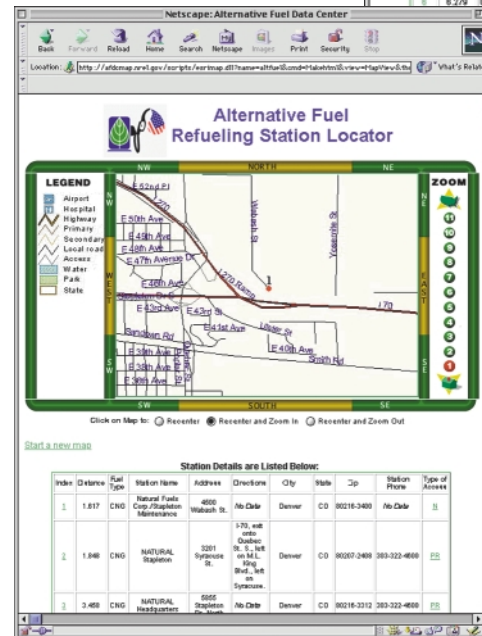
As you can see, we have selected CNG and used option 2 for the location. Now, click "Map It."

**Screen 2** – Here is our map, along with a listing of the refueling sites shown. Stations are shown as red triangles with numbers. You can zoom in on any station by clicking on the Index number from the Station Details in the frame below the map. The Details appear in a small scrollable frame that allows the map to remain on the screen while the data is viewed. You can also use the "Recenter," "Zoom In" and "Zoom Out" buttons at the side and bottom of the map.



Click on #1 in the Index listing to zoom to that station.

**Screen 3** - This is the map of the specific refueling station we have just chosen.



To obtain another map, click "Start a new map." You will be taken back to screen 1.

To print the map or station details, you must click the individual frames to make them active, then click on the browser's print button. Maps and details may only be printed separately.



### Other valuable resources:

Alternative Fuels Data Center—<http://www.afdc.doe.gov/>

Clean Cities—<http://www.cities.doe.gov/>

Office of Transportation Technologies—<http://www.ott.doe.gov/>

Bioenergy Information Network—<http://www.esd.ornl.gov/bfdp>

Cooperative Automotive Research for Advanced Technology  
(CARAT Program)—<http://www.ipd.anl.gov/carat>

Energy Efficiency + Renewable Energy Network  
(EREN)—<http://www.eren.doe.gov>

FutureCar Challenge—<http://www.uscar.org/futurecar>

Hybrid Electric Vehicle Program—<http://www.hev.doe.gov>

Partnership for a New Generation of Vehicles  
(PNGV)—<http://www.ta.doc.gov/pngv>